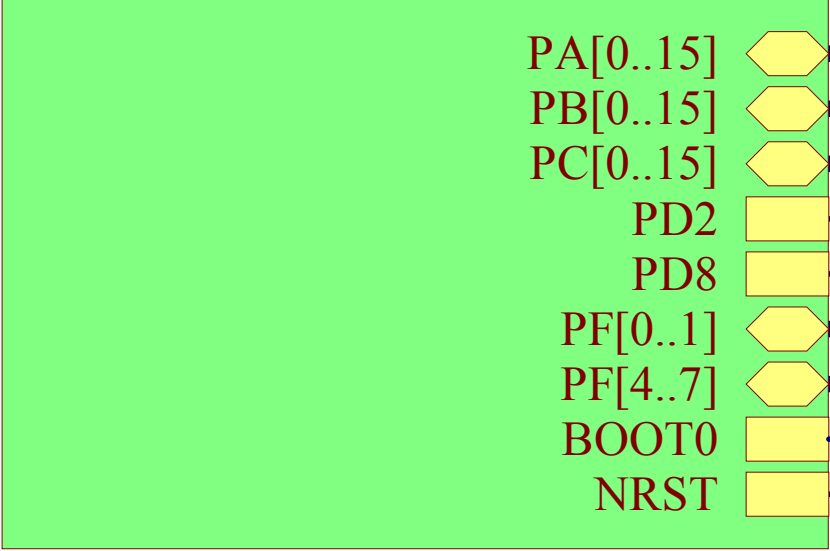
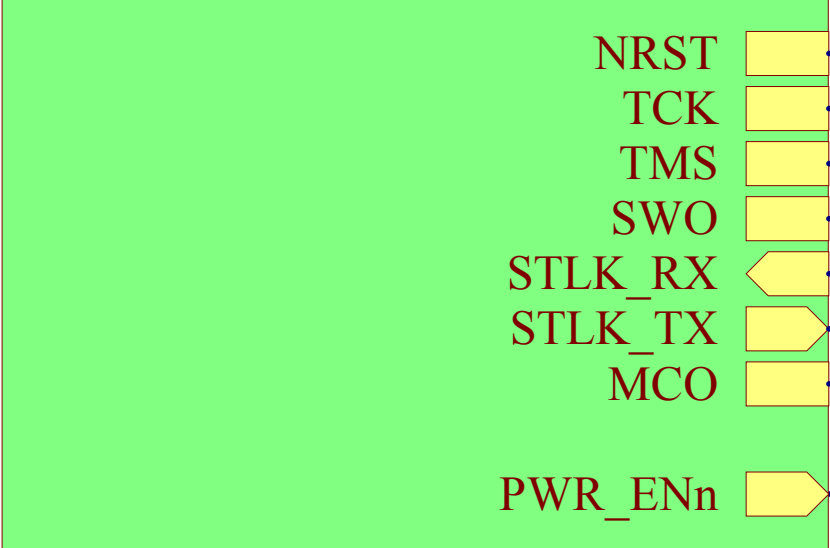


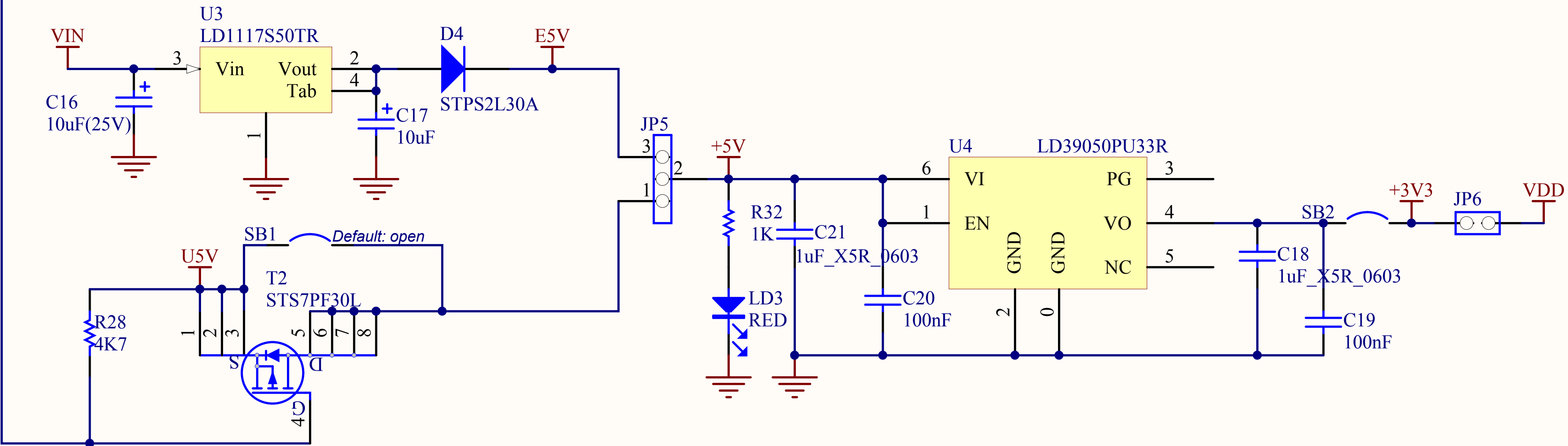
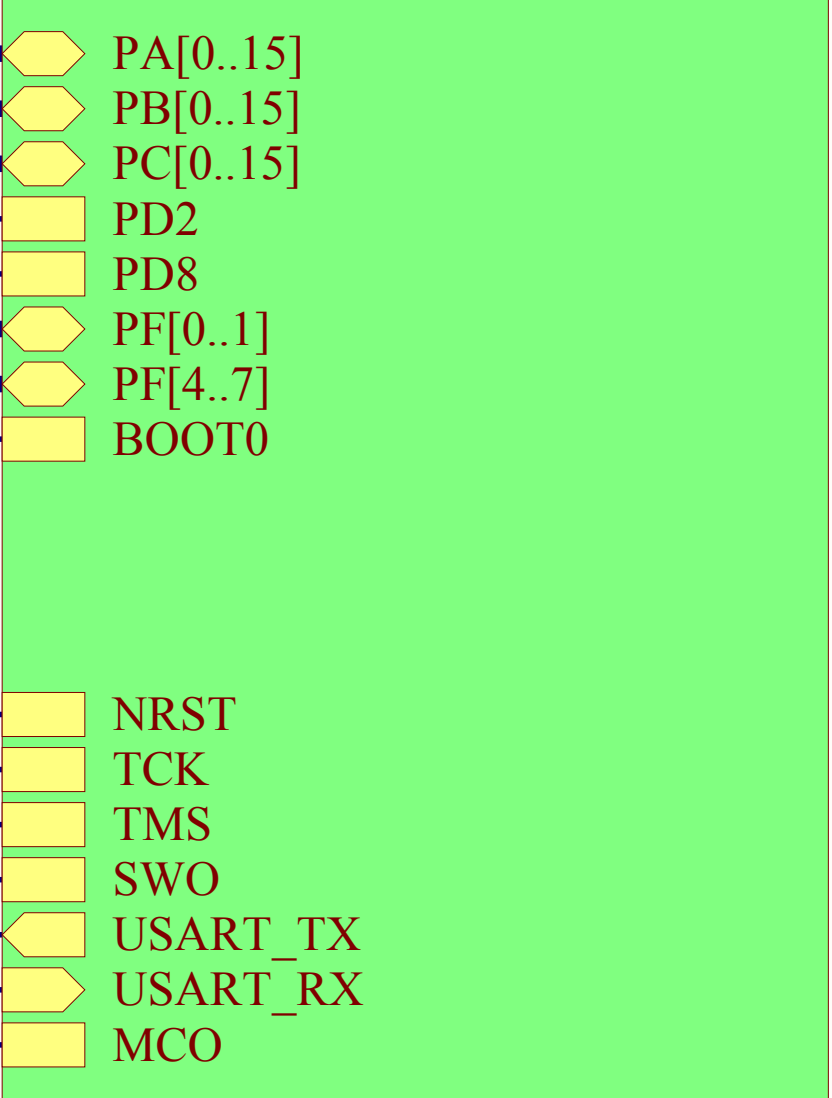
U_Connectors
Connectors.SchDoc



U_ST_LINK_V2-1
ST_LINK_V2-1.SCHDOC



U_MCU_64
MCU_64.SchDoc



Note1: Text in italic placed on a wire doesn' t correspond to net name. It just helps to identify rapidly Arduino's signal related to this wire.
Note2: Remove [N/A] on R34, R36, C31, C32 , X2 from C.1 to C.2
Note3: Add " default open" on SB48, SB49, SB55 from C.1 to C.2
Note4: Replace " default open" by " default closed" on SB16 & SB50 from C.1 to C.2
Note5: C26's value changed from 2.2uF to 4.7uF from C.2 to C.3

Title: TOP & POWER		
Project: NUCLEO-XXXXRX		
Size: A4	Reference: MB1136	Revision: C.3
Date: 6/16/2014		Sheet: 1 of 4



